

Global - Round Trial 2010 - 4

Inter-Instrument Averages, Inter-Instrument Variations, Typical within-instrument Variations

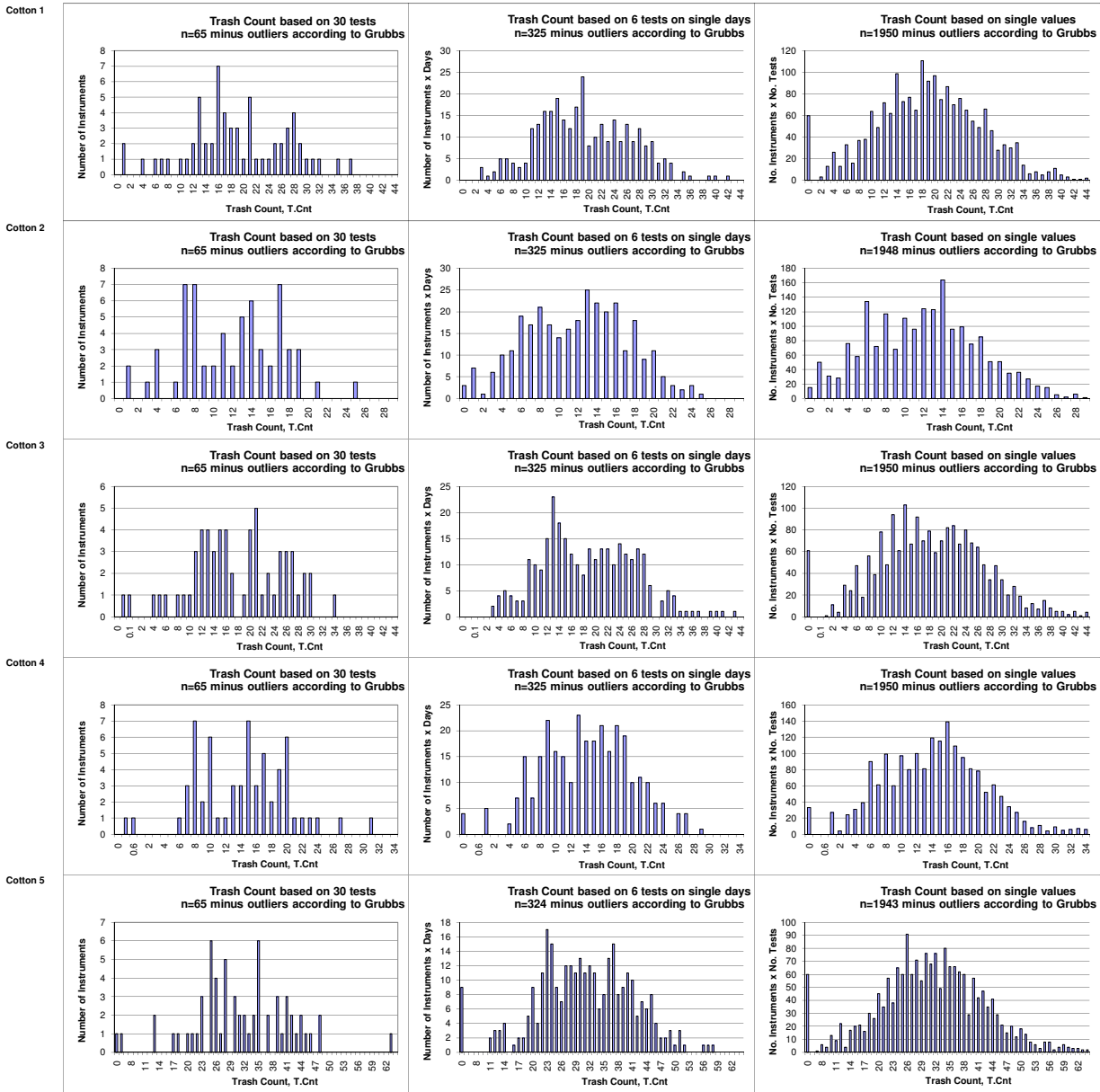
Trash Count								
			Cotton 1	Cotton 2	Cotton 3	Cotton 4	Average	Cotton 5
Average of Instruments (Grubbs)			19.033	11.937	17.827	14.286		31.165
Number Of Instruments			65	65	65	65	65	65
Inter-Instrument Variation	based on 30 tests	SD	7.935	5.138	7.594	5.905	6.643	10.874
		CV %	41.7	43.0	42.6	41.3	42.2	34.9
	based on 6 tests	SD	7.987	5.375	8.316	5.879	6.889	10.682
		CV %	42.0	45.0	46.6	41.2	43.7	34.3
	based on single tests	SD	8.419	5.806	8.668	6.551	7.361	11.488
		CV %	44.2	48.6	48.6	45.9	46.8	36.9
Typical within-instrument Variation (Median)	between different days with each 6 tests	SD	2.072	1.538	2.053	1.808	1.868	3.239
		CV %	10.9	12.9	11.5	12.7	12.0	10.4
	between single tests on one day	SD	2.598	2.246	2.745	2.391	2.495	3.810
		CV %	13.7	18.8	15.4	16.7	16.2	12.2
	between all tests on different days	SD	3.277	2.838	3.616	3.306	3.259	5.388
		CV %	17.2	23.8	20.3	23.1	21.1	17.3

Trash Area								
			Cotton 1	Cotton 2	Cotton 3	Cotton 4	Average	Cotton 5
Average of Instruments (Grubbs)			0.186	0.120	0.166	0.147		0.403
Number Of Instruments			65	64	64	65	65	65
Inter-Instrument Variation	based on 30 tests	SD	0.050	0.036	0.045	0.034	0.041	0.109
		CV %	26.9	29.9	27.0	23.1	26.7	26.9
	based on 6 tests	SD	0.055	0.035	0.051	0.046	0.047	0.127
		CV %	29.5	29.4	30.8	30.9	30.2	31.5
	based on single tests	SD	0.063	0.040	0.063	0.055	0.055	0.154
		CV %	34.0	33.5	37.8	37.4	35.6	38.2
Typical within-instrument Variation (Median)	between different days with each 6 tests	SD	0.027	0.018	0.025	0.031	0.025	0.063
		CV %	14.7	15.1	15.1	20.9	16.4	15.5
	between single tests on one day	SD	0.038	0.025	0.036	0.035	0.034	0.1
		CV %	20.2	21.2	21.9	23.7	21.7	23.0
	between all tests on different days	SD	0.046	0.035	0.046	0.049	0.044	0.120
		CV %	25.0	29.2	27.6	33.2	28.7	29.8

Maturity								
			Cotton 1	Cotton 2	Cotton 3	Cotton 4	Average	Cotton 5
Average of Instruments (Grubbs)			78.4818	86.0821	78.5418	87.7956		83.1429
Number Of Instruments			58	58	58	58	58	58
Inter-Instrument Variation	based on 30 tests	SD	4.1110	2.7329	4.2734	3.0806	3.5495	1.9344
		CV %	5.2	3.2	5.4	3.5	4.3	2.3
	based on 6 tests	SD	3.9527	2.7888	4.0476	2.9978	3.4467	1.8201
		CV %	5.0	3.2	5.2	3.4	4.2	2.2
	based on single tests	SD	4.0288	2.8135	4.0514	3.0344	3.4820	1.8524
		CV %	5.1	3.3	5.2	3.5	4.3	2.2
Typical within-instrument Variation (Median)	between different days with each 6 tests	SD	0.2981	0.3118	0.3206	0.3206	0.3128	0.3142
		CV %	0.4	0.4	0.4	0.4	0.4	0.4
	between single tests on one day	SD	0.4407	0.3978	0.4009	0.4246	0.4160	0.4546
		CV %	0.6	0.5	0.5	0.5	0.5	0.5
	between all tests on different days	SD	0.4917	0.4983	0.4971	0.5080	0.4988	0.5011
		CV %	0.6	0.6	0.6	0.6	0.6	0.6

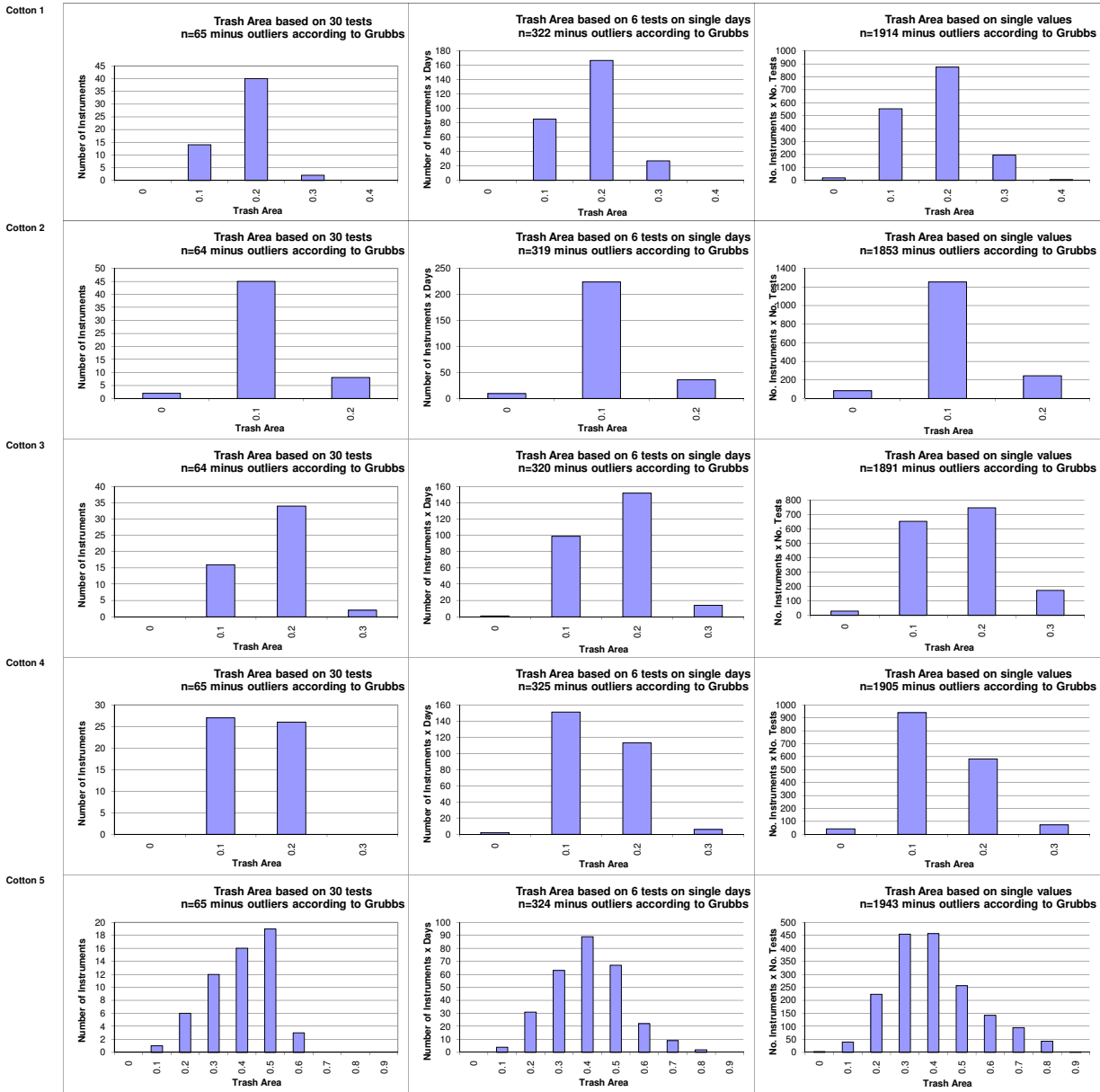
SFI								
			Cotton 1	Cotton 2	Cotton 3	Cotton 4	Average	Cotton 5
Average of Instruments (Grubbs)			16.382	6.862	13.034	7.412		9.369
Number Of Instruments			74	74	74	74	74	74
Inter-Instrument Variation	based on 30 tests	SD	3.097	1.466	2.249	1.518	2.083	1.750
		CV %	18.9	21.4	17.3	20.5	19.5	18.7
	based on 6 tests	SD	3.147	1.466	2.341	1.558	2.128	1.713
		CV %	19.2	21.4	18.0	21.0	19.9	18.3
	based on single tests	SD	3.287	1.485	2.497	1.625	2.224	1.815
		CV %	20.1	21.6	19.2	21.9	20.7	19.4
Typical within-instrument Variation (Median)	between different days with each 6 tests	SD	0.546	0.221	0.435	0.274	0.369	0.368
		CV %	3.3	3.2	3.3	3.7	3.4	3.9
	between single tests on one day	SD	0.869	0.338	0.695	0.419	0.580	0.605
		CV %	5.3	4.9	5.3	5.6	5.3	6.5
	between all tests on different days	SD	1.002	0.404	0.846	0.497	0.687	0.725
		CV %	6.1	5.9	6.5	6.7	6.3	7.7

Test Result Distributions
Trash Count



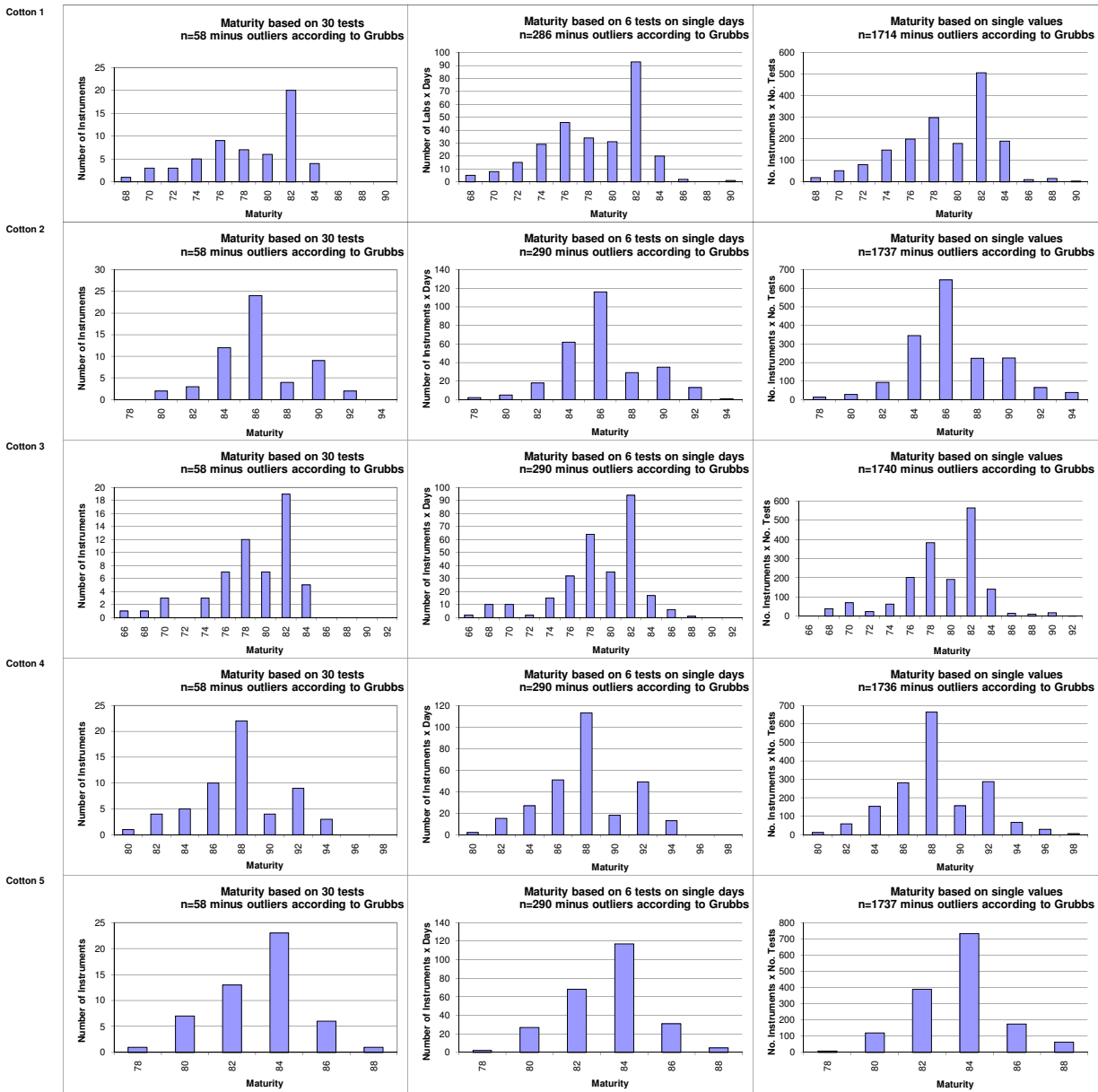
(Only results from instruments/days/single tests that are not regarded as outliers according to Grubbs' method.)
(classes are defined as > lower limit and <= upper limit)

Test Result Distributions
Trash Area



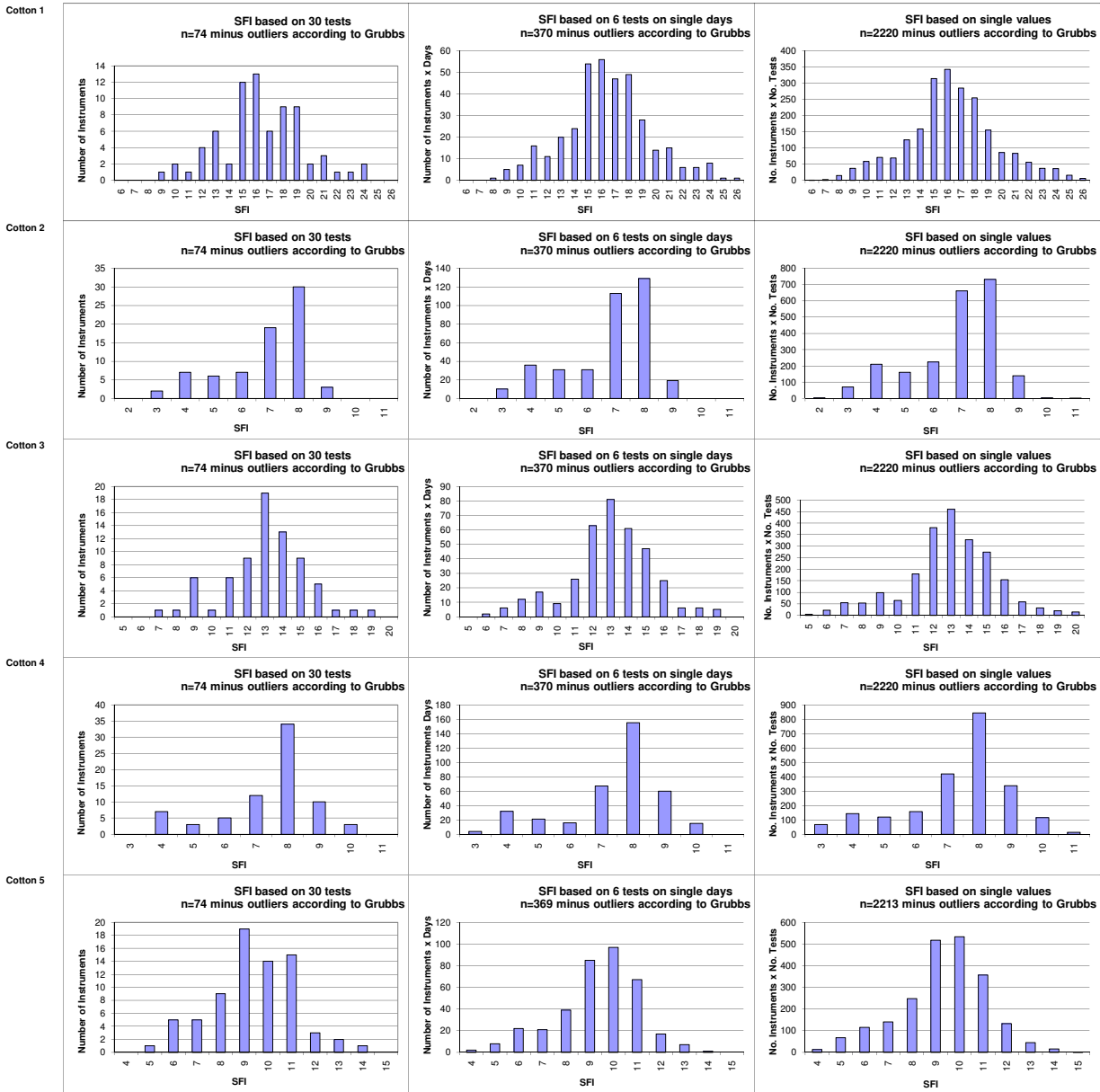
(Only results from instruments/days/single tests that are not regarded as outliers according to Grubbs' method) (classes are defined as > lower limit and <= upper limit)

Test Result Distributions
Maturity



(Only results from instruments/days/single tests that are not regarded as outliers according to Grubbs' method)

Test Result Distributions
SFI



(Only results from instruments/days/single tests that are not regarded as outliers according to Grubbs' method)
(classes are defined as > lower limit and <= upper limit)