

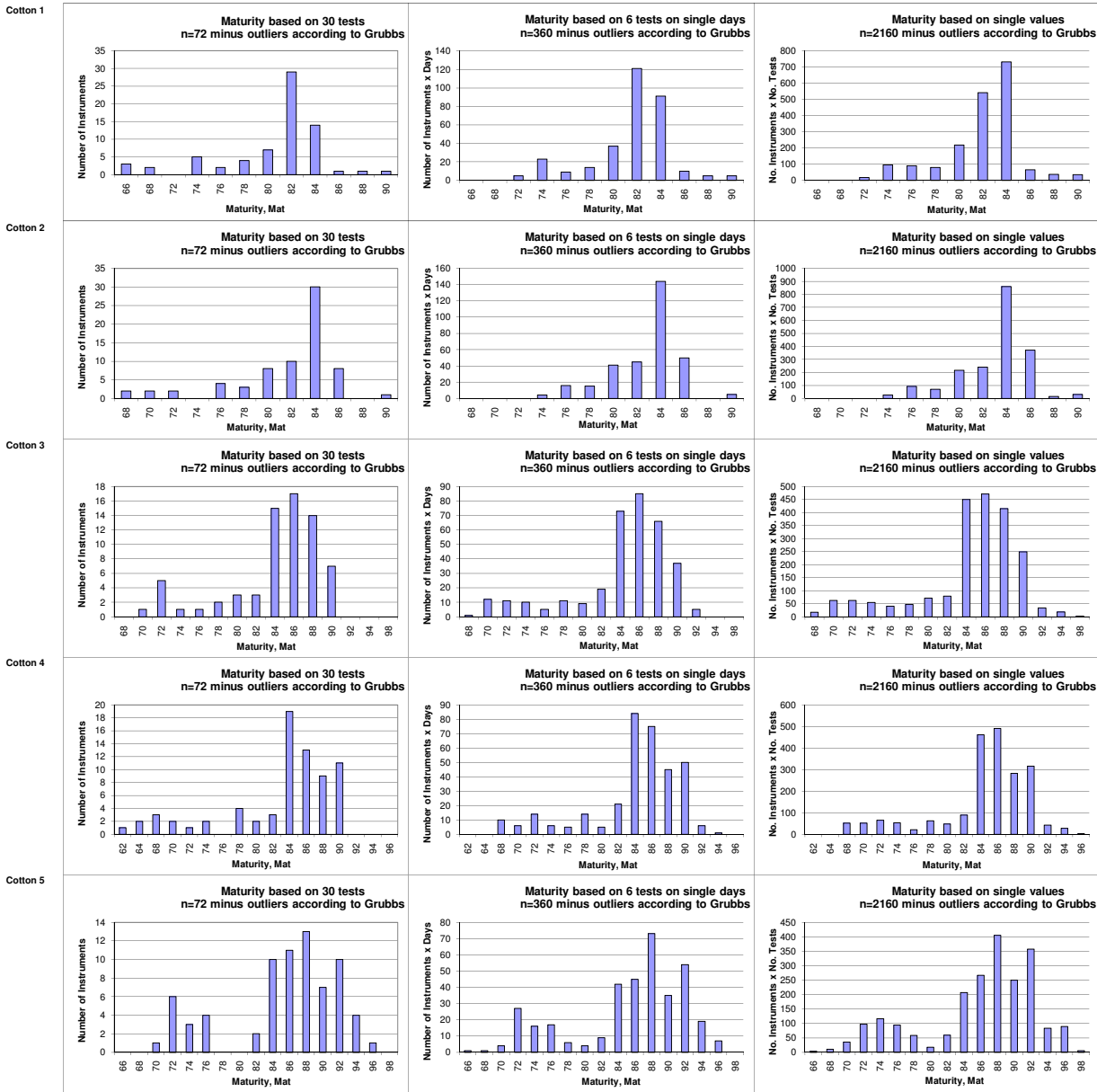
Global - Round Trials 2010 - 3

Inter-Instrument Averages, Inter-Instrument Variations, Typical within-instrument Variations

Maturity								
			Cotton 1	Cotton 2	Cotton 3	Cotton 4	Average	Cotton 5
Average of Instruments (Grubbs)			80.438	81.580	84.055	82.940		85.366
Number Of Instruments			72	72	72	72	72	72
Inter-Instrument Variation	based on 30 tests	SD	4.939	4.477	5.139	6.915	5.367	6.647
		CV %	6.1	5.5	6.1	8.3	6.5	7.8
	based on 6 tests	SD	3.339	2.824	5.128	5.549	4.210	6.717
		CV %	4.2	3.5	6.1	6.7	5.1	7.9
	based on single tests	SD	3.289	2.897	5.292	5.660	4.284	6.774
		CV %	4.1	3.6	6.3	6.8	5.2	7.9
Typical within-instrument Variation (Median)	between different days with each 6 tests	SD	0.323	0.291	0.367	0.329	0.328	0.412
		CV %	0.4	0.4	0.4	0.4	0.4	0.5
	between single tests on one day	SD	0.464	0.462	0.458	0.523	0.477	0.504
		CV %	0.6	0.6	0.5	0.6	0.6	0.6
	between all tests on different days	SD	0.556	0.539	0.621	0.658	0.594	0.660
		CV %	0.7	0.7	0.7	0.8	0.7	0.8

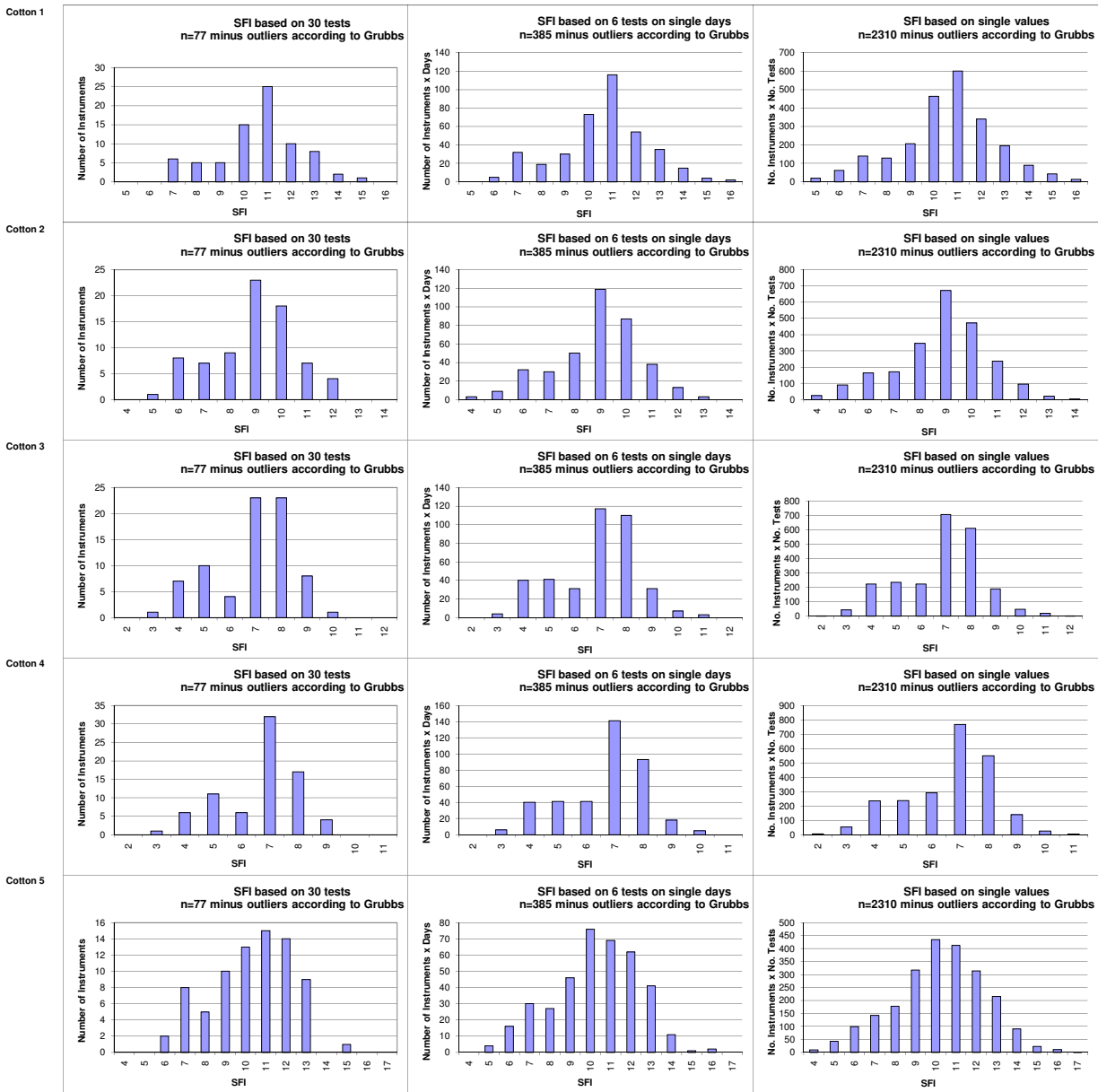
SFI								
			Cotton 1	Cotton 2	Cotton 3	Cotton 4	Average	Cotton 5
Average of Instruments (Grubbs)			10.624	8.910	6.930	6.710		10.281
Number Of Instruments			77	77	77	77	77	77
Inter-Instrument Variation	based on 30 tests	SD	1.818	1.639	1.527	1.460	1.611	2.009
		CV %	17.1	18.4	22.0	21.8	19.8	19.5
	based on 6 tests	SD	1.884	1.660	1.549	1.474	1.642	2.102
		CV %	17.7	18.6	22.4	22.0	20.2	20.4
	based on single tests	SD	2.010	1.748	1.597	1.527	1.720	2.208
		CV %	18.9	19.6	23.0	22.8	21.1	21.5
Typical within-instrument Variation (Median)	between different days with each 6 tests	SD	0.366	0.283	0.201	0.204	0.264	0.382
		CV %	3.4	3.2	2.9	3.0	3.1	3.7
	between single tests on one day	SD	0.624	0.517	0.367	0.358	0.467	0.7
		CV %	5.9	5.8	5.3	5.3	5.6	6.6
between all tests on different days	SD	0.704	0.543	0.415	0.416	0.520	0.790	
	CV %	6.6	6.1	6.0	6.2	6.2	7.7	

Test Result Distributions
Maturity



(Only results from instruments/days/single tests that are not regarded as outliers according to Grubbs' method.)
(classes are defined as > lower limit and <= upper limit)

Test Result Distributions
SFI



(Only results from instruments/days/single tests that are not regarded as outliers according to Grubbs' method) (classes are defined as > lower limit and <= upper limit)