



This project is co-funded by
the European Union and the
Common Fund for Commodities



ICA Bremen
The Global Centre for Cotton Testing and Research

CSITC Task Force Contributions

Axel Drieling
Bremen Fibre Institute (FIBRE) /
ICA Bremen



20th Meeting of the CSITC Task Force
Cartagena, Columbia, October 2, 2013





This project is co-funded by
the European Union and the
Common Fund for Commodities

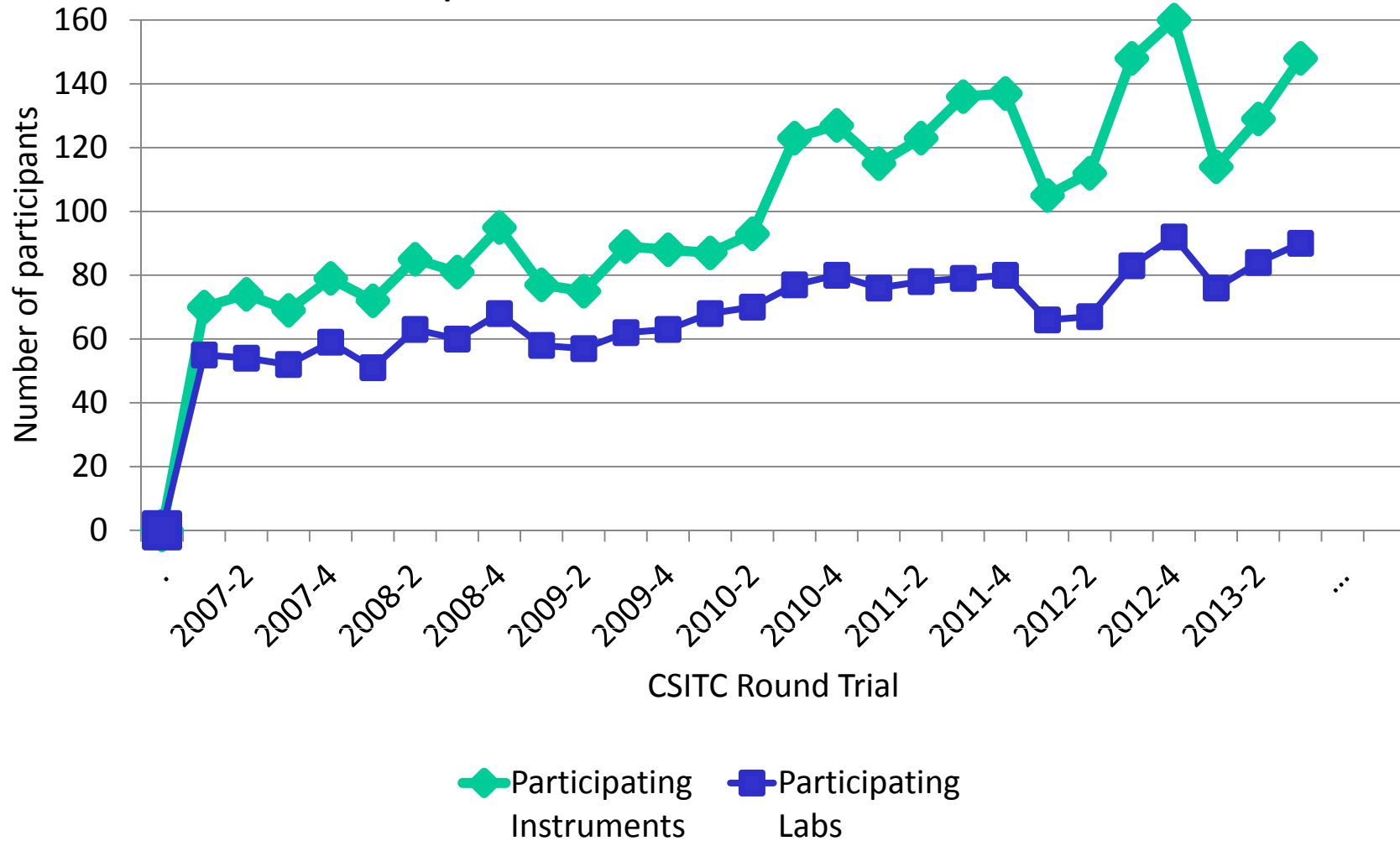
CSITC Round Trials



- Headed by ICAC
- Executed by
 - ICAC: Registration
 - USDA-AMS: Samples
 - Bremen Fiber Institute: Evaluation
- 4 Round trials per year
- Evaluation and results done with the database on CSITC.org
 - Database developed in partnership with Generation 10
- Started in 2007

- Round Trial results for RT 2013-3 were sent out last Friday (Sept 27),
the publication of the general evaluation will follow

Participants in the CSITC Round Trials





This project is co-funded by
the European Union and the
Common Fund for Commodities

Laboratory Type



From those labs with defined roles:

- 72% Cotton production / cotton associations / control
- 9% Processing
- 21% Others (research, manufacturers, others)

→ Cotton processing labs are missing



This project is co-funded by the European Union and the Common Fund for Commodities

Laboratories: Continents



Continents

- Asia 45
- South America 24
- North America 19
- Europe 17
- Africa 16
- Australia 5

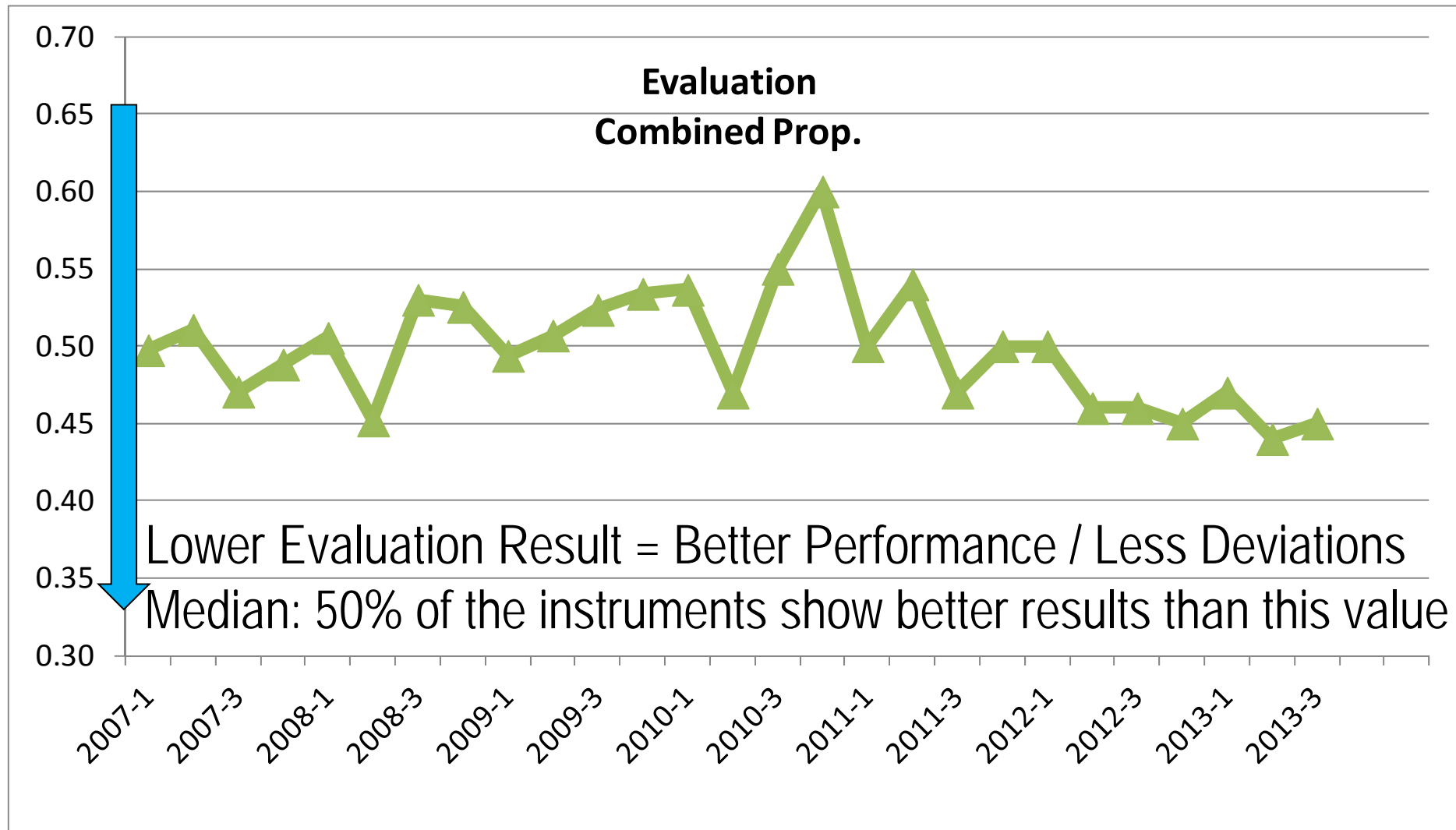
Countries

- Brazil 21
- India 21
- USA 18
- Uzbekistan 13
- Australia 5

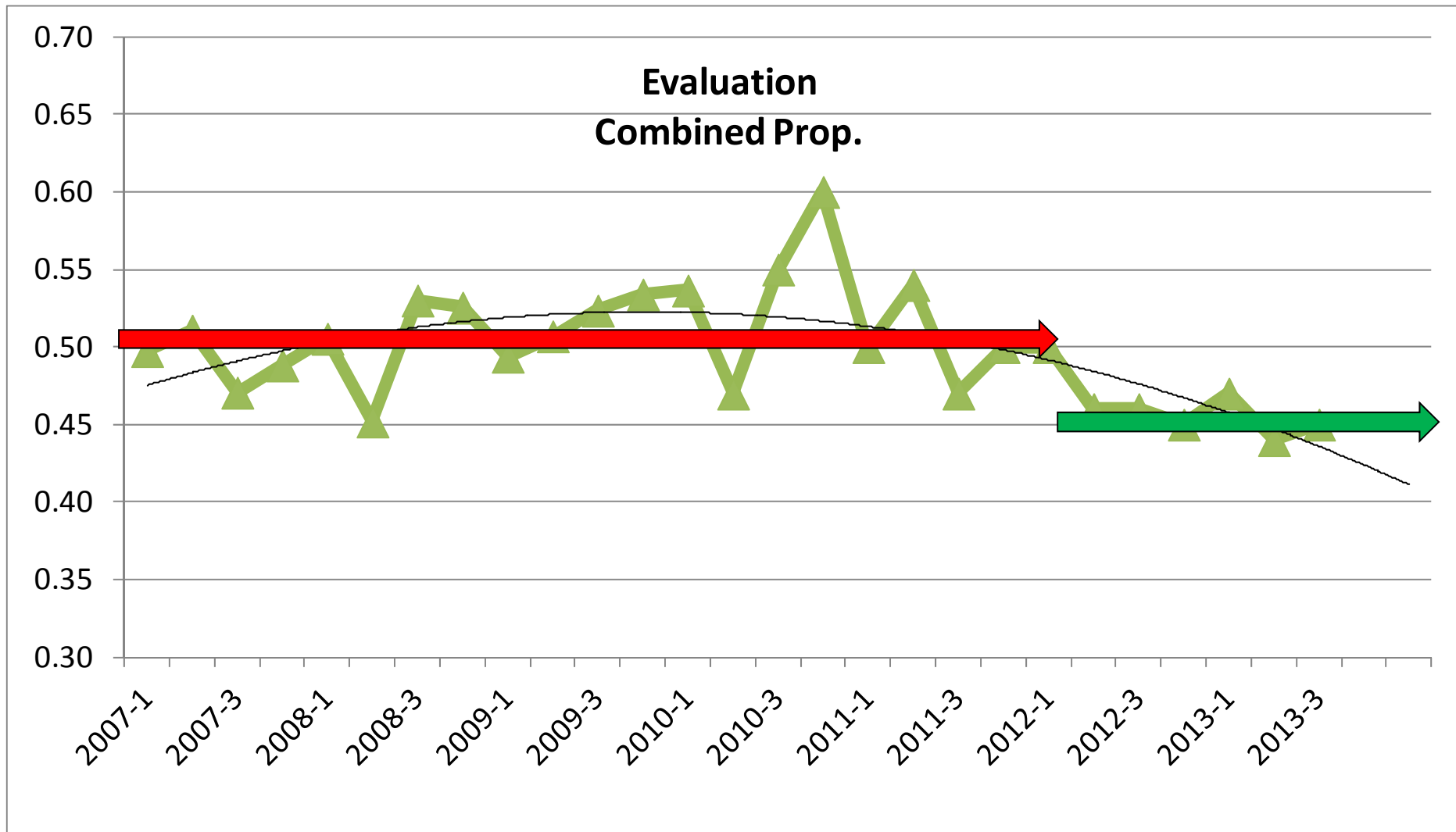
→ The participation does not fully reflect the given classing laboratories

(based on labs marked as active – containing labs with no participation in the current year)

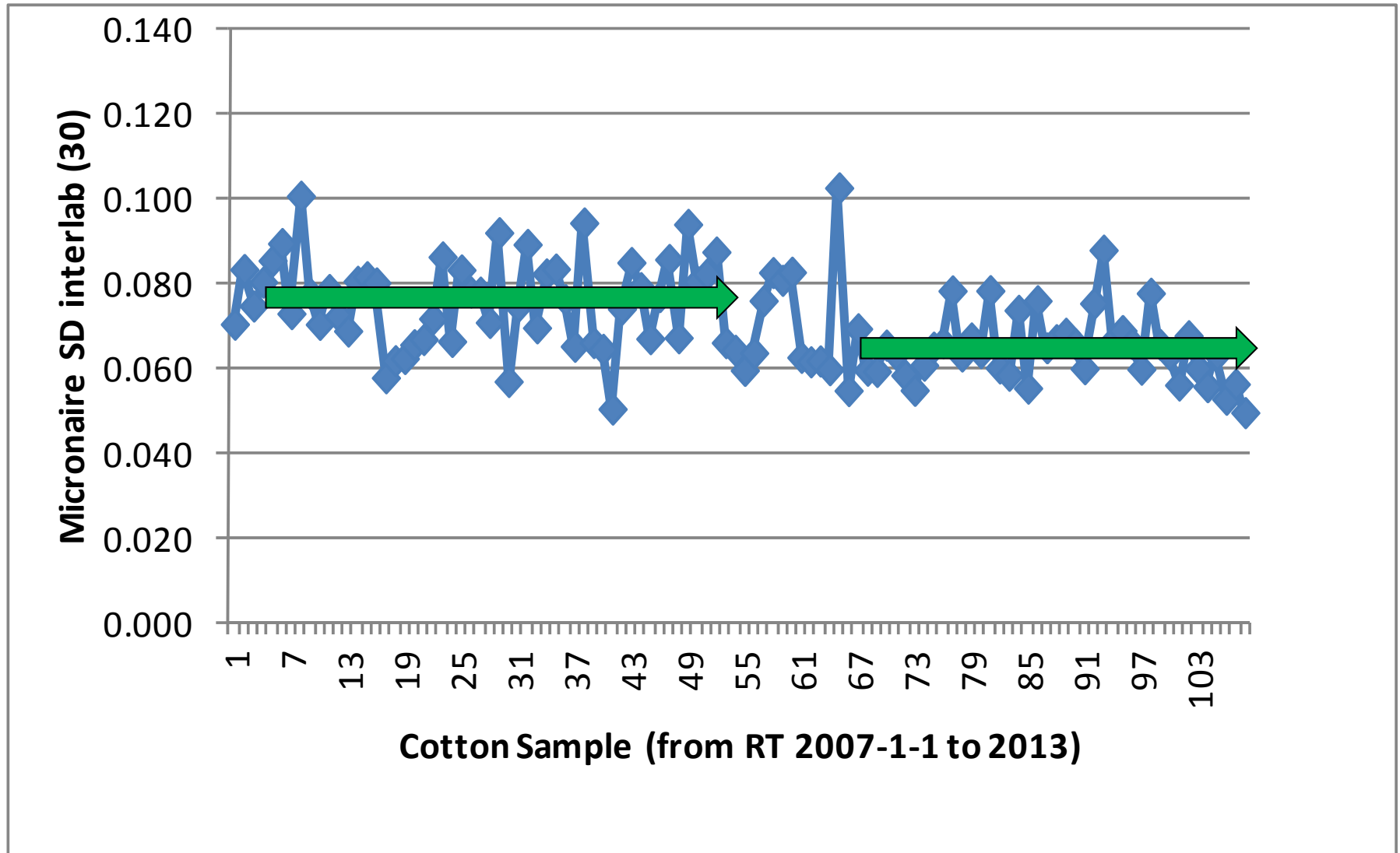
CSITC RT: Evaluation of Combined Properties



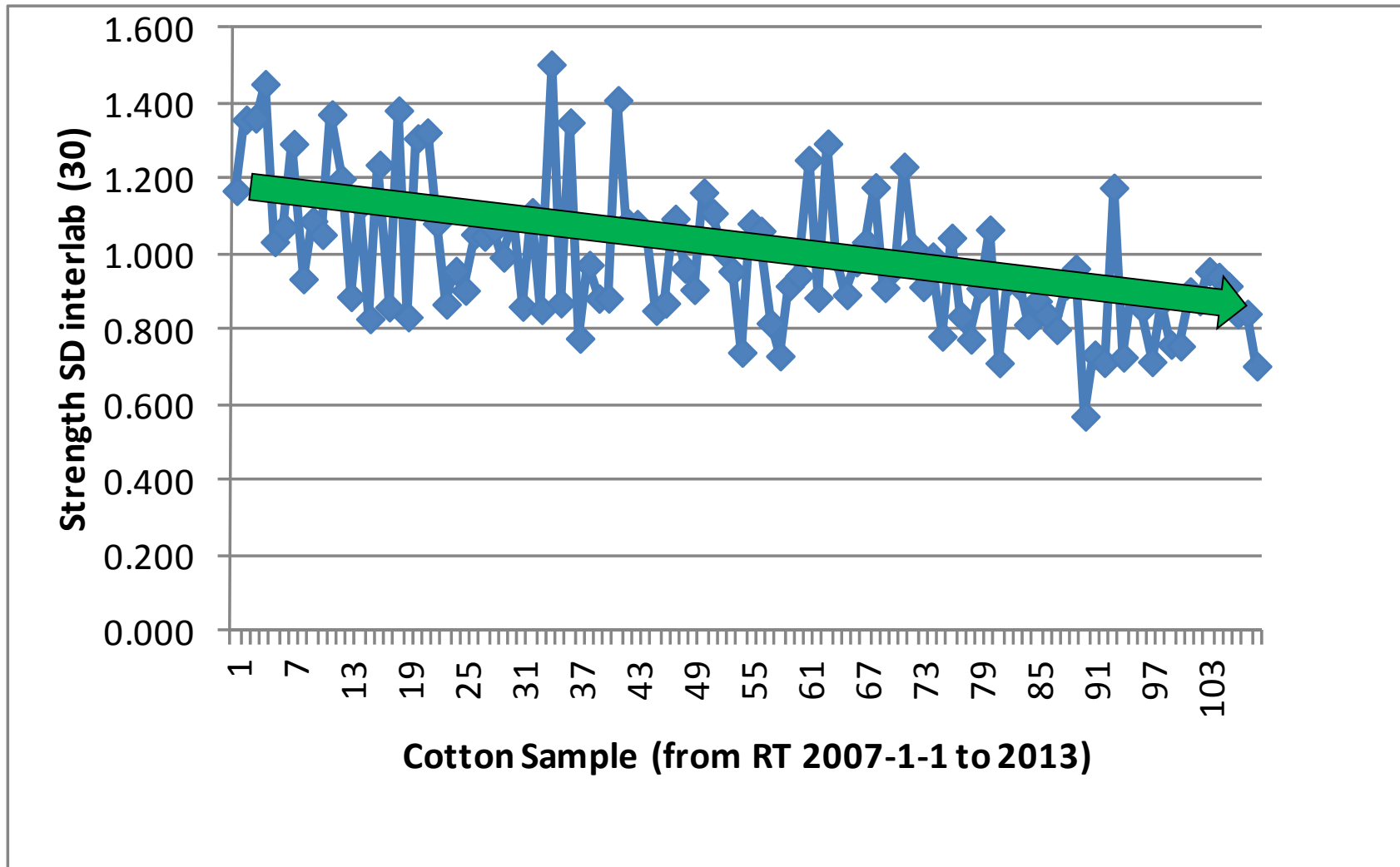
CSITC RT: Evaluation of Combined Properties



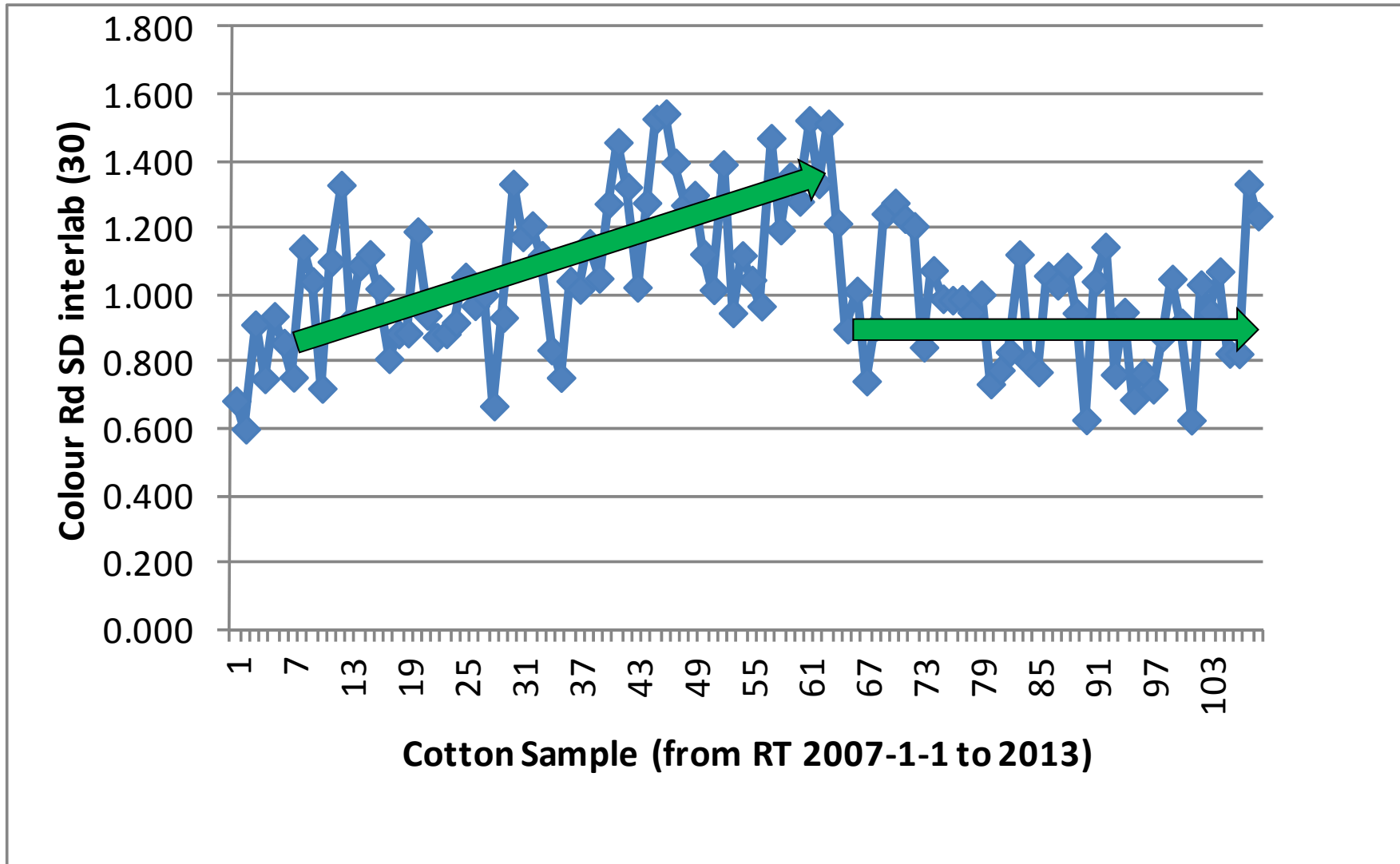
Interlab SD for Micronaire



Interlab SD for Strength

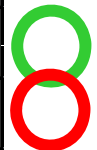


Interlab SD for Colour Rd



Within Limit Evaluation based on 30 test per sample

% of instruments completely within limits						
based on 30 tests per sample						
RT	Mic	Str	Len: UHML	L-Unif	Col: Rd	Col: +b
Limits	0.2	2	0.03	2	1.5	1
Average	95.0	88.1	91.7	96.5	78.9	93.2
2011-3	96	83	91	99	77	89
2011-4	93	84	90	93	76	93
2012-1	93	88	90	94	80	96
2012-2	97	88	93	97	80	94
2012-3	96	89	93	97	74	89
2013-1	98	95	96	98	88	95
2013-2	96	93	94	98	85	95
2013-3	91	85	86	95	71	94
2013-4						



Based on 30 tests per sample: Considering mainly systematic deviations

Within Limit Evaluation based on 1 test per sample

% of instruments $\geq 95\%$ within limits						
based on single tests per sample						
RT	Mic	Str	Len: UHML	L-Unif	Col: Rd	Col: +b
Limits	0.2	2	0.03	2	1.5	1
Average	87.2	56.8	71.3	80.6	57.0	83.6
2011-3	90	57	74	84	61	82
2011-4	85	53	61	76	63	81
2012-1	87	52	70	74	61	85
2012-2	90	63	76	79	59	85
2012-3	88	61	78	90	60	80
2013-1	87	54	72	78	50	85
2013-2	86	57	69	81	52	87
2013-3	85	58	70	82	50	84
2013-4						

Based on single tests per sample:

→ Including variation between single tests, commercially important