

Global - Round Trial 2011 - 2

Inter-Instrument Averages, Inter-Instrument Variations, Typical within-instrument Variations

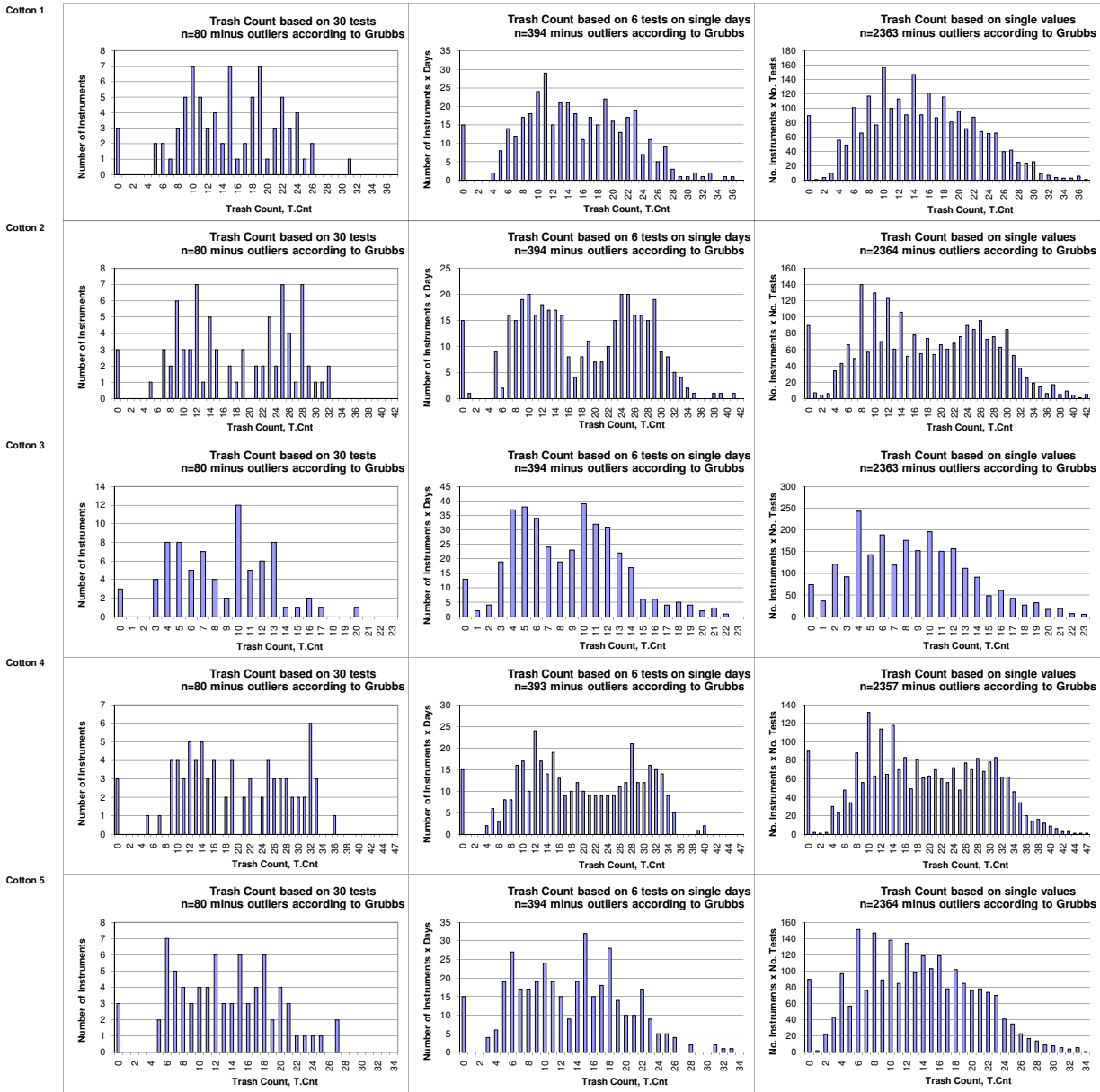
Trash Count								
			Cotton 1	Cotton 2	Cotton 3	Cotton 4	Average	Cotton 5
Average of Instruments (Grubbs)			15.009	17.880	8.503	19.296		13.139
Number Of Instruments			80	80	80	80	80	80
Inter-Instrument Variation	based on 30 tests	SD	6.624	8.355	4.112	9.002	7.023	6.161
		CV %	44.1	46.7	48.4	46.7	46.5	46.9
	based on 6 tests	SD	7.071	8.883	4.464	9.414	7.458	6.568
		CV %	47.1	49.7	52.5	48.8	49.5	50.0
	based on single tests	SD	7.397	9.313	4.833	9.825	7.842	6.984
		CV %	49.3	52.1	56.8	50.9	52.3	53.2
Typical within-instrument Variation (Median)	between different days with each 6 tests	SD	1.897	1.967	1.295	2.017	1.794	1.730
		CV %	12.6	11.0	15.2	10.5	12.3	13.2
	between single tests on one day	SD	2.584	2.369	1.554	2.635	2.285	2.179
		CV %	17.2	13.3	18.3	13.7	15.6	16.6
	between all tests on different days	SD	3.286	3.275	2.188	3.439	3.047	3.143
		CV %	21.9	18.3	25.7	17.8	20.9	23.9

Trash Area								
			Cotton 1	Cotton 2	Cotton 3	Cotton 4	Average	Cotton 5
Average of Instruments (Grubbs)			0.152	0.144	0.080	0.167		0.140
Number Of Instruments			80	80	80	80	80	80
Inter-Instrument Variation	based on 30 tests	SD	0.040	0.040	0.030	0.047	0.039	0.041
		CV %	26.4	27.4	37.1	28.3	29.8	29.6
	based on 6 tests	SD	0.050	0.049	0.035	0.059	0.048	0.051
		CV %	33.0	33.7	43.6	35.1	36.3	36.5
	based on single tests	SD	0.061	0.058	0.043	0.066	0.057	0.066
		CV %	40.5	40.2	53.5	39.6	43.4	47.3
Typical within-instrument Variation (Median)	between different days with each 6 tests	SD	0.027	0.024	0.015	0.026	0.023	0.027
		CV %	17.5	17.0	18.8	15.5	17.2	19.1
	between single tests on one day	SD	0.038	0.031	0.021	0.032	0.031	0.0
		CV %	25.2	21.5	26.6	19.4	23.2	23.6
	between all tests on different days	SD	0.050	0.041	0.032	0.046	0.042	0.051
		CV %	32.8	28.8	40.6	27.4	32.4	36.2

Maturity								
			Cotton 1	Cotton 2	Cotton 3	Cotton 4	Average	Cotton 5
Average of Instruments (Grubbs)			84.3116	84.4218	86.5601	84.7246		85.6767
Number Of Instruments			77	77	77	77	77	77
Inter-Instrument Variation	based on 30 tests	SD	3.4182	2.5741	4.3989	4.0639	3.6138	2.4349
		CV %	4.1	3.0	5.1	4.8	4.2	2.8
	based on 6 tests	SD	3.4977	2.5400	4.3716	3.8126	3.5555	2.2107
		CV %	4.1	3.0	5.1	4.5	4.2	2.6
	based on single tests	SD	3.5550	2.5467	4.2359	3.7342	3.5179	2.3227
		CV %	4.2	3.0	4.9	4.4	4.1	2.7
Typical within-instrument Variation (Median)	between different days with each 6 tests	SD	0.2789	0.2635	0.3206	0.3028	0.2914	0.2472
		CV %	0.3	0.3	0.4	0.4	0.3	0.3
	between single tests on one day	SD	0.3761	0.3931	0.3761	0.3699	0.3788	0.4171
		CV %	0.4	0.5	0.4	0.4	0.4	0.5
	between all tests on different days	SD	0.4983	0.4983	0.5085	0.4983	0.5008	0.4983
		CV %	0.6	0.6	0.6	0.6	0.6	0.6

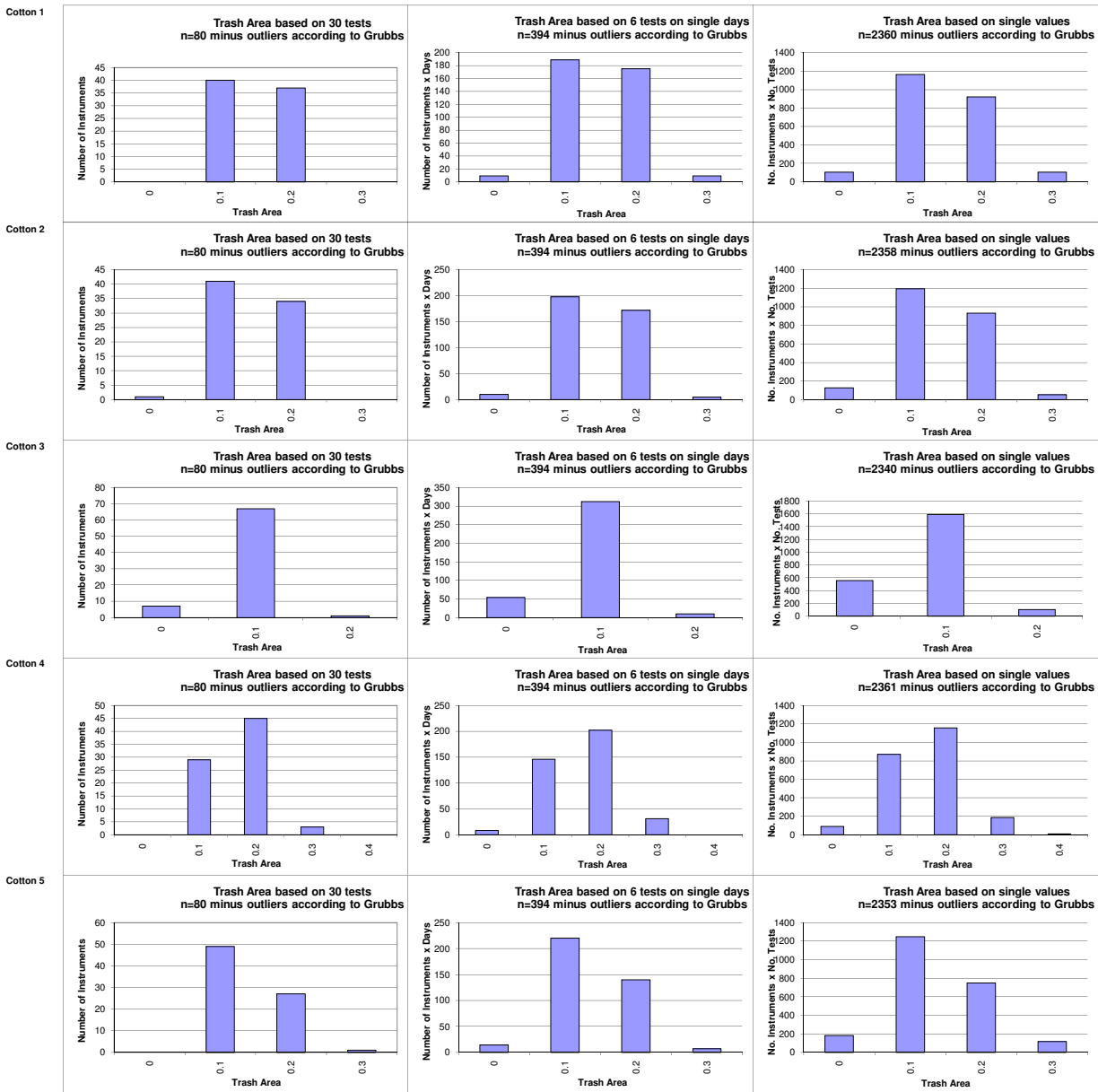
SFI								
			Cotton 1	Cotton 2	Cotton 3	Cotton 4	Average	Cotton 5
Average of Instruments (Grubbs)			10.506	12.306	10.325	6.665		7.161
Number Of Instruments			88	88	88	88	88	88
Inter-Instrument Variation	based on 30 tests	SD	1.868	2.228	1.870	1.610	1.894	1.618
		CV %	17.8	18.1	18.1	24.2	19.5	22.6
	based on 6 tests	SD	1.919	2.300	1.916	1.535	1.917	1.597
		CV %	18.3	18.7	18.6	23.0	19.6	22.3
	based on single tests	SD	1.964	2.412	2.055	1.545	1.994	1.624
		CV %	18.7	19.6	19.9	23.2	20.3	22.7
Typical within-instrument Variation (Median)	between different days with each 6 tests	SD	0.321	0.378	0.378	0.186	0.316	0.198
		CV %	3.1	3.1	3.7	2.8	3.1	2.8
	between single tests on one day	SD	0.526	0.595	0.588	0.309	0.504	0.335
		CV %	5.0	4.8	5.7	4.6	5.0	4.7
	between all tests on different days	SD	0.646	0.748	0.697	0.367	0.614	0.374
		CV %	6.1	6.1	6.7	5.5	6.1	5.2

Test Result Distributions
Trash Count



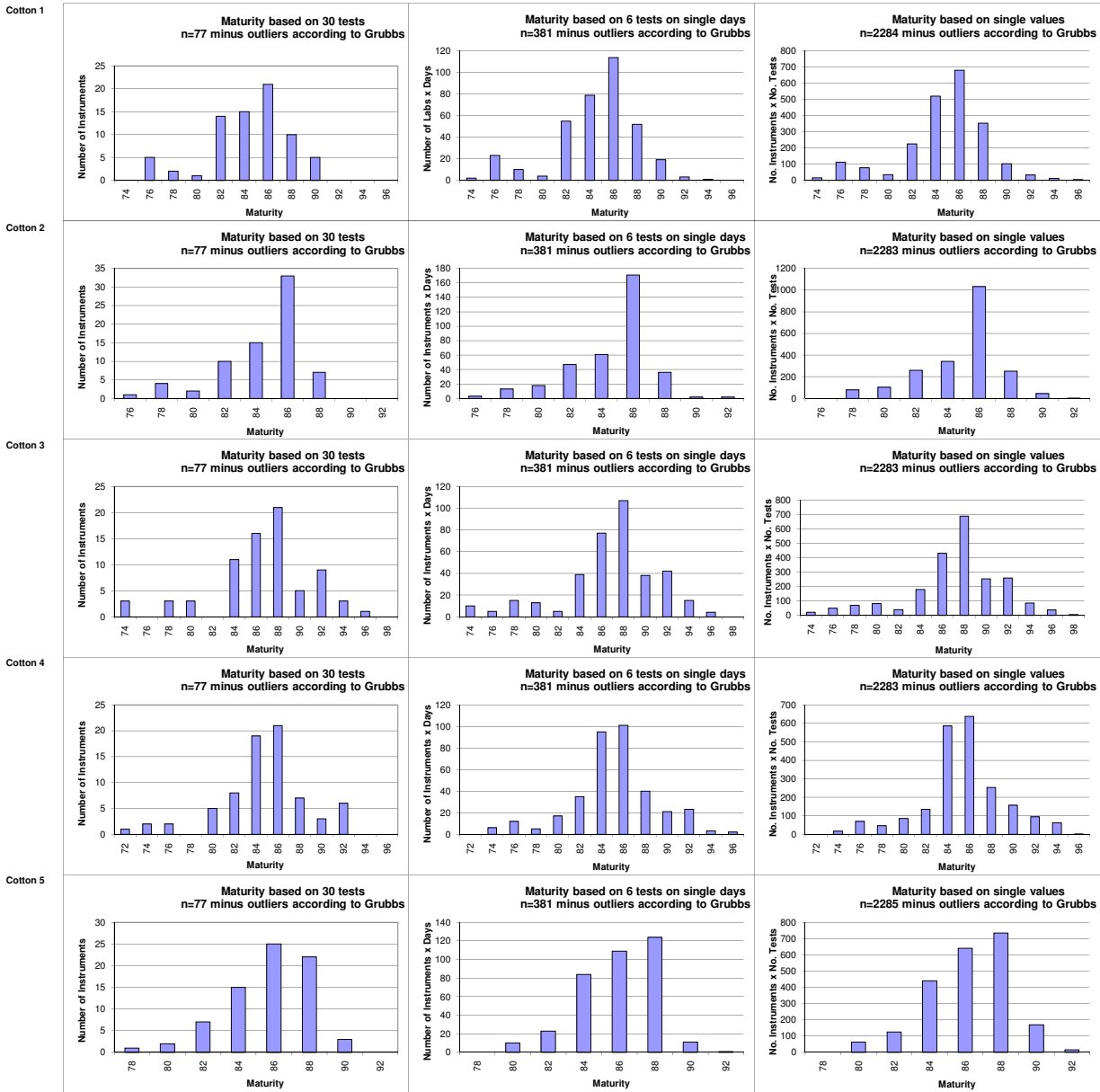
(Only results from instruments/days/single tests that are not regarded as outliers according to Grubbs' method.)
(classes are defined as > lower limit and <= upper limit)

Test Result Distributions
Trash Area



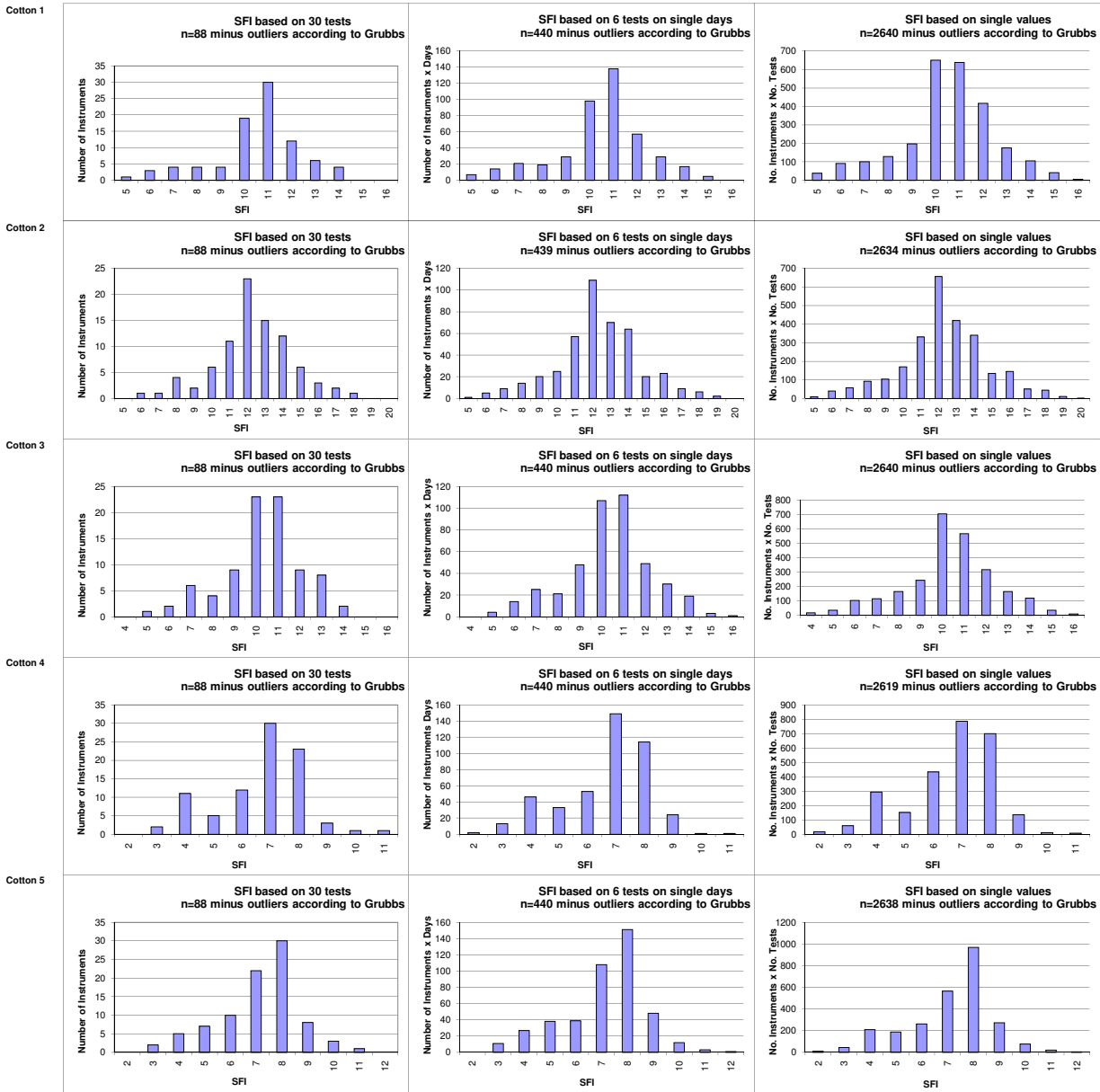
(Only results from instruments/days/single tests that are not regarded as outliers according to Grubbs' method) (classes are defined as > lower limit and <= upper limit)

Test Result Distributions
Maturity



(Only results from instruments/days/single tests that are not regarded as outliers according to Grubbs' method)

Test Result Distributions
SFI



(Only results from instruments/days/single tests that are not regarded as outliers according to Grubbs' method)
(classes are defined as > lower limit and <= upper limit)